

# ZINE PACK TEMPLATES.

## **PLACING DIRECTIONS:**

To get Started in Adobe InDesign go to >File > Place & select your exported images as JPG or PNG files [you can select multiple at a time]. [to export from AI go to >File >Export >"Export as" select PNG from drop down menu. Export as Artboards, this will export each panel separately. Make a folder for all exported files to be placed within.] Once you click "Open" you will see a little icon on your cursor that denotes the placed image. Click and drag where you want to paste. Then repeat. If you want to rotate then select image, click "e" on your keyboard and then hover over the bottom right corner to get rotation icon and click and drag to rotate. You can also click shift while rotating to get constrained 90 degree angles.

## **SCROLL DOWN TO SEE ZINE TEMPLATES:**

Scroll down to see templates for coordinating AI, PS, or 4D experiments Zines.

## **PRINTING:**

Scroll down to the last page to see printing instructions. To print front and back print pages together as 2-sided printing [flip on the long edge].



# ZINE A.

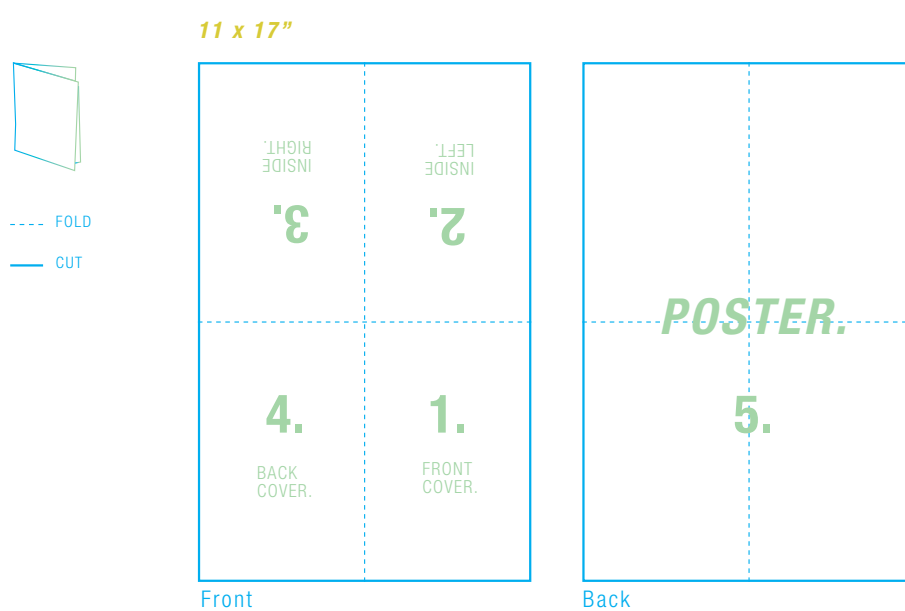
## TEMPLATE.

ADOBE ILLUSTRATOR EXPERIMENTS

PANELS: 5.5 X 8.5

OVERALL PAPER SIZE: 11X17" [TABLOID]

### ZINE A. ADOBE ILLUSTRATOR.



#### PANEL ASSIGNMENTS:

#### ZINE A. (ADOBE ILLUSTRATOR)

THEME = IMAGINARY ENVIRONMENTS

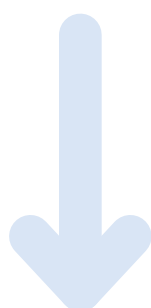
PANEL 1 = *Shapes Drawing*

PANEL 2 = *Vector Line*

PANEL 3 = *Vector Objects*

PANEL 4 = *Patterns*

PANEL 5 = \_\_\_\_\_ [choice]



# ZINE A. TEMPLATE.

ADOBE ILLUSTRATOR EXPERIMENTS

SIDE 1. PANELS: 5.5 X 8.5

OVERALL PAPER SIZE: 11X17" [TABLOID]

WHEN FOLDED INSIDE RIGHT  
PANELS: 5.5 X 8.5

03.

WHEN FOLDED INSIDE LEFT  
PANELS: 5.5 X 8.5

02.

04.

WHEN FOLDED BACK COVER  
PANELS: 5.5 X 8.5

01.

WHEN FOLDED FRONT COVER  
PANELS: 5.5 X 8.5

05.

WHEN FOLDED **INSIDE POSTER**  
PANEL: **11X17"**

# ZINE B.

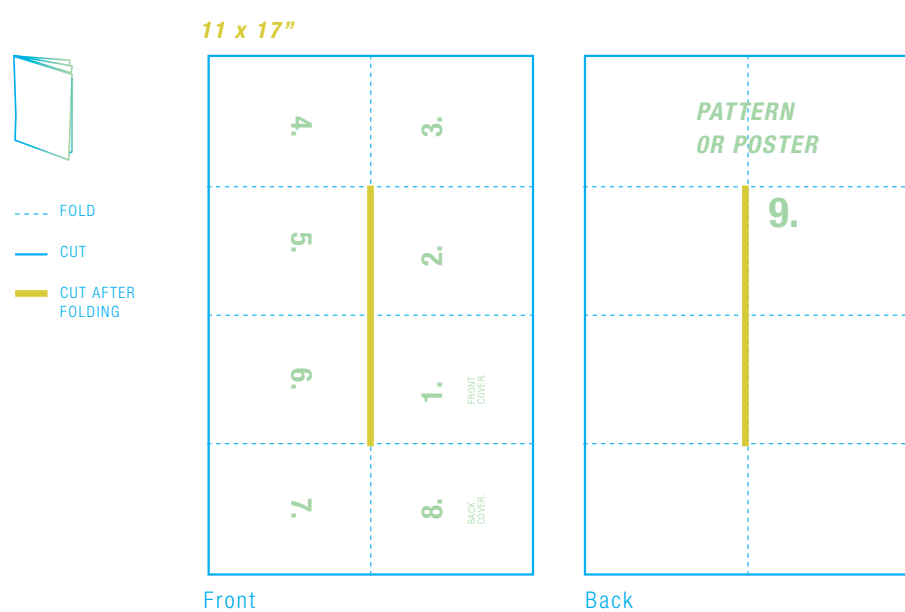
## TEMPLATE.

ADOBE PHOTOSHOP EXPERIMENTS

PANELS: 5.5 X 4.252

OVERALL PAPER SIZE: 11X17" [TABLOID]

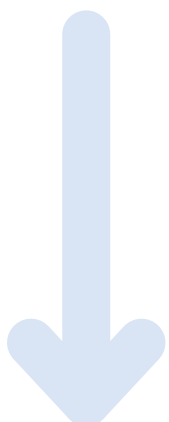
### ZINE B. ADOBE PHOTOSHOP.



#### PANEL ASSIGNMENTS:

#### ZINE B. {ADOBE PHOTOSHOP}

- THEME = PSYCHOLOGICAL SPACES OF THE SENCES**
- PANEL 1 = *Cycle of Life Circle Drawing*
  - PANEL 2 = *Spaces of Life Square Drawing*
  - PANEL 3 = *Figurative Face Collage*
  - PANEL 4 = *Masking using Layers*
  - PANEL 5 = *Analog Layered Protest Collage*
  - PANEL 6 = *Monster Drawing*
  - PANEL 7 = *Difference Filter Experimentation*
  - PANEL 8 = \_\_\_\_\_ [choice]
  - PANEL 9 = \_\_\_\_\_ [choice]



WHEN FOLDED **INSIDE TWO**  
PANELS: **5.5" H X 4.252" W**  
OVERALL PAPER SIZE: 11X17" (TABLOID)

03.

WHEN FOLDED **INSIDE ONE**  
PANELS: **5.5" H X 4.252" W**  
OVERALL PAPER SIZE: 11X17" (TABLOID)

02.

## ZINE B. TEMPLATE.

ADOBE PHOTOSHOP EXPERIMENTS  
SIDE 1. PANELS: **5.5 X 4.252**  
OVERALL PAPER SIZE: 11X17" (TABLOID)

WHEN FOLDED **FRONT COVER**  
PANELS: **5.5" H X 4.252" W**  
OVERALL PAPER SIZE: 11X17" (TABLOID)

01.

WHEN FOLDED **BACK COVER**  
PANELS: **5.5" H X 4.252" W**  
OVERALL PAPER SIZE: 11X17" (TABLOID)

08.

04.

WHEN FOLDED **INSIDE THREE**  
PANELS: **5.5" H X 4.252" W**  
OVERALL PAPER SIZE: 11X17" (TABLOID)

05.

WHEN FOLDED **INSIDE FOUR**  
PANELS: **5.5" H X 4.252" W**  
OVERALL PAPER SIZE: 11X17" (TABLOID)

06.

WHEN FOLDED **INSIDE FIVE**  
PANELS: **5.5" H X 4.252" W**  
OVERALL PAPER SIZE: 11X17" (TABLOID)

06.

WHEN FOLDED **INSIDE SIX**  
PANELS: **5.5" H X 4.252" W**  
OVERALL PAPER SIZE: 11X17" (TABLOID)

09.

WHEN FOLDED **INSIDE POSTER**  
PANEL: **11X17"**

# ZINE C.

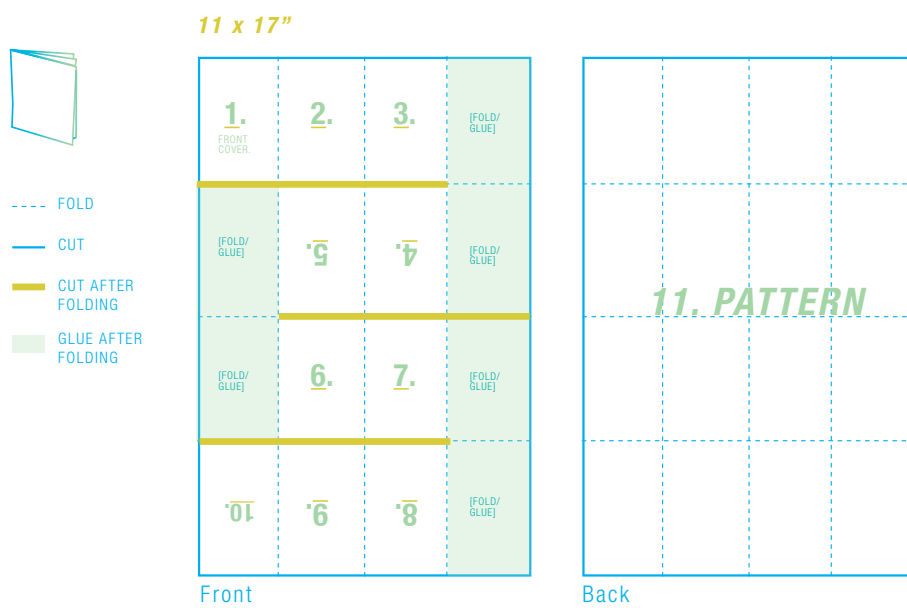
## TEMPLATE.

4D / ANIMATION FRAME / EXPERIMENTS

PANELS: 4.25 X 2.76

OVERALL PAPER SIZE: 11X17" [TABLOID]

### ZINE C. 4D / ANIMATION.....



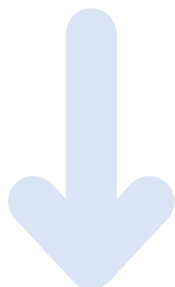
#### PANEL ASSIGNMENTS:

#### ZINE C. { 4D / ANIMATION }

THEME = -----

PANEL 1-9 = *Frames from Gif or Stop Motion*

PANEL 10 = *QR Code to YouTube Link*





01.

WHEN FOLDED FRONT COVER  
PANELS: 4.25" H X 2.76" W  
OVERALL PAPER SIZE: 11X17" (TABLOID)

02.

WHEN FOLDED INSIDE ONE  
PANELS: 4.25" H X 2.76" W  
OVERALL PAPER SIZE: 11X17" (TABLOID)

03.

WHEN FOLDED INSIDE TWO  
PANELS: 4.25" H X 2.76" W  
OVERALL PAPER SIZE: 11X17" (TABLOID)

GLUE

WHEN FOLDED INSIDE FOUR  
PANELS: 4.25" H X 2.76" W  
OVERALL PAPER SIZE: 11X17" (TABLOID)

05.

WHEN FOLDED INSIDE THREE  
PANELS: 4.25" H X 2.76" W  
OVERALL PAPER SIZE: 11X17" (TABLOID)

04.

## ZINE C. TEMPLATE.

4D / ANIMATION STILLS / EXPERIMENTS  
SIDE 1. PANELS: 4.25 X 2.76"  
OVERALL PAPER SIZE: 11X17" (TABLOID)

06.

WHEN FOLDED INSIDE FIVE  
PANELS: 4.25" H X 2.76" W  
OVERALL PAPER SIZE: 11X17" (TABLOID)

07.

WHEN FOLDED INSIDE SIX  
PANELS: 4.25" H X 2.76" W  
OVERALL PAPER SIZE: 11X17" (TABLOID)

GLUE

WHEN FOLDED BACK COVER  
PANELS: 4.25" H X 2.76" W  
OVERALL PAPER SIZE: 11X17" (TABLOID)

10.

WHEN FOLDED INSIDE EIGHT  
PANELS: 4.25" H X 2.76" W  
OVERALL PAPER SIZE: 11X17" (TABLOID)

09.

WHEN FOLDED INSIDE SEVEN  
PANELS: 4.25" H X 2.76" W  
OVERALL PAPER SIZE: 11X17" (TABLOID)

08.

GLUE





# ZINE printing.

Print

## PRINTING LOCATIONS:

Find a printing location that can print full color, 11x17 [Tabloid/Ledger] on premium paper [do NOT use card stock and do not use Plain Paper]. Examples of printing locations include Office Depot, Staples, FedEx office, etc. There is also a printer in the Graphic Design classrooms [Wilson 221 and Hayworth Fine Arts 301]. The HPU campus has a number of printing locations as well.

## PREPARING FOR PRINTING OFF-SITE:

To prepare your files for printing, save a copy of this file [>File >Save As >Rename [add a new number to beginning of the file name "2-ZinePackTemplate.indd"]]. Go to the Page Panel [>Window >Pages]. Delete unnecessary pages [like directions and header pages]. You should have 6 primary pages to print, at 11x17" Tabloid size. Go to >File, >Export, under format pick "Adobe PDF Print". Make new folder titled "Send to Printer" Send to the printing location you have chosen online. Let printer know your pages need to be printed on 11x17, two sided, flip on the long edge on premium paper but not card stock.

## PRINTING FROM XEROX PHASER 7800:

[in classroom]

to print in the classroom open your InDesign file on one of the lab computers. [to move a whole InDesign file over without broken links you can go to >File >Package and save. This will package your whole InDesign file for printing. This is helpful if you are working on your own laptop]

### ADOBE INDESIGN DIALOG BOX

Go to >File, >Print. A dialog box will appear.

Under General Tab [top left] go to Printer and pick the "Xerox Phaser 7800". Click Setup Tab [top left], under Paper Size pick Tabloid from the dropdown menu, then under orientation pick the first icon to the left. Under Options at the bottom select "Scale to Fit".

### PRINTER DIALOG BOX

\_\_\_Go to: "Printer" [second button over on the bottom row] and select Layout dropdown and then go to "Paper Feed".

\_\_\_Under: "Paper Feed" select tray size based on Media size of your document. Pick one below. For the Zine Pack it will be 11x17, Tabloid which is tray 4.

\_\_\_ TRAY 2: Letter = 8.5"x11"

\_\_\_ TRAY 3: Legal = 8.5"x14"

\_\_\_ TRAY 4: Tabloid = 11"x17"

\_\_\_ TRAY 5: Oversized Tabloid = 12"x18"

\_\_\_Go to: "Paper Feed" dropdown menu and select "Xerox Features".

\_\_\_Under: "Xerox Features" select Paper, and change size and color to "Automatically Select".

\_\_\_[2-sided options Under: "Xerox Features" select "2-sided Printing" and select desired option. for the Zine Pack you are flipping on the LONG edge.]

\_\_\_[Consider saving this as a preset if it will save to help you.]

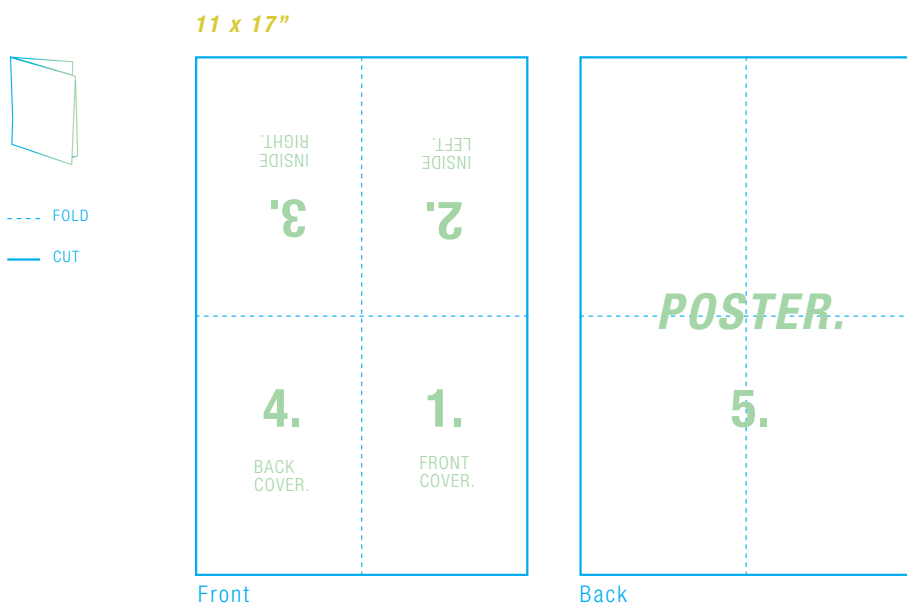
\_\_\_Click "Print" button on the bottom right.

## AFTER PRINTING:

After printing first trim the white edges off of your prints [this is an expectation for every critique, for draft and final pieces] and then fold and glue. We recommend you use a Scotch 3M Permanent Glue Stick for Zine Pack glued areas.

# OVERVIEW & FOLDS

## ZINE A. ADOBE ILLUSTRATOR.



### PANEL ASSIGNMENTS:

#### ZINE A. {ADOBE ILLUSTRATOR}

THEME = IMAGINARY ENVIRONMENTS

PANEL 1 = *Shapes Drawing*

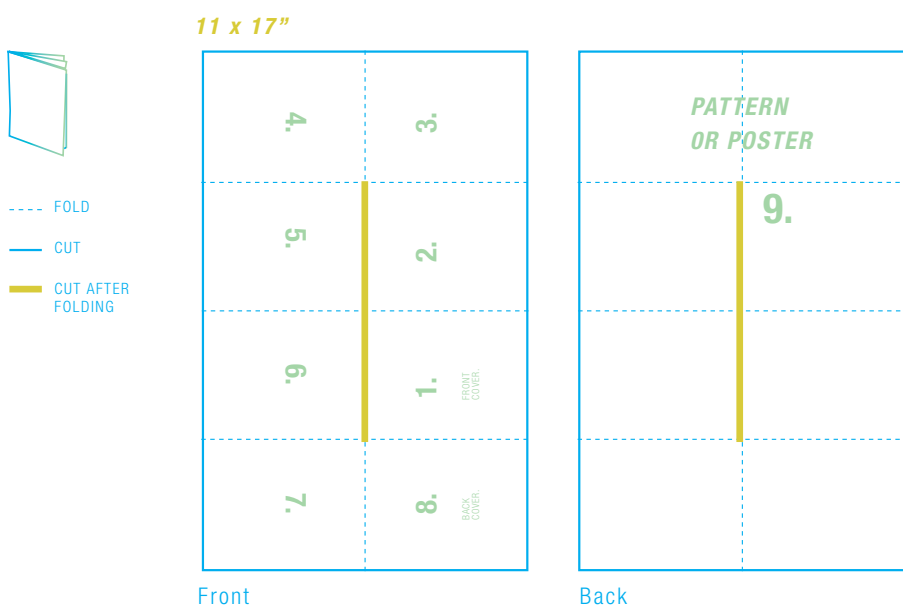
PANEL 2 = *Vector Line*

PANEL 3 = *Vector Objects*

PANEL 4 = *Patterns*

PANEL 5 = \_\_\_\_\_ [choice]

## ZINE B. ADOBE PHOTOSHOP.



### PANEL ASSIGNMENTS:

#### ZINE B. {ADOBE PHOTOSHOP}

THEME = PSYCHOLOGICAL SPACES OF THE SENCES

PANEL 1 = *Cycle of Life Circle Drawing*

PANEL 2 = *Spaces of Life Square Drawing*

PANEL 3 = *Figurative Face Collage*

PANEL 4 = *Masking using Layers*

PANEL 5 = *Analog Layered Protest Collage*

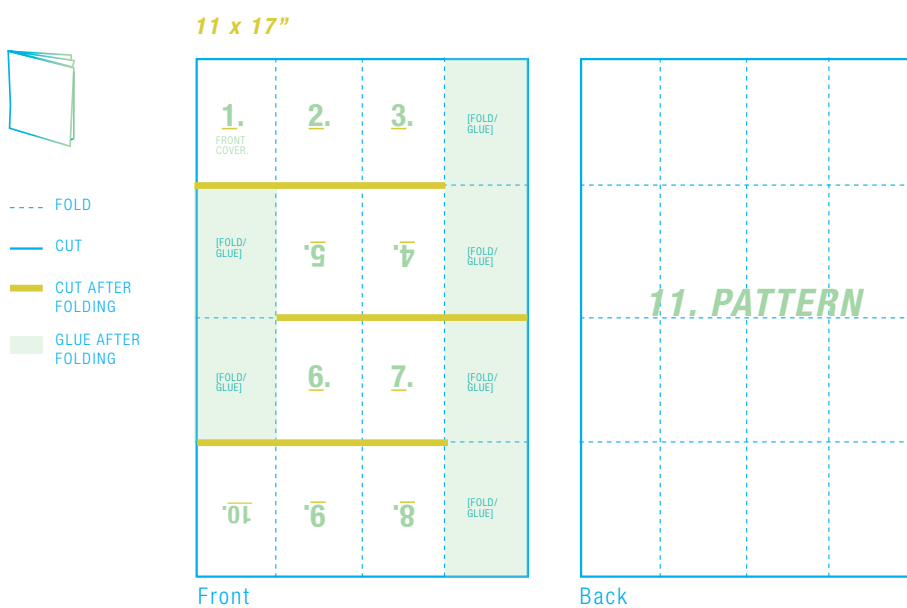
PANEL 6 = *Monster Drawing*

PANEL 7 = *Difference Filter Experimentation*

PANEL 8 = \_\_\_\_\_ [choice]

PANEL 9 = \_\_\_\_\_ [choice]

## ZINE C. 4D / ANIMATION.



### PANEL ASSIGNMENTS:

#### ZINE C. { 4D / ANIMATION }

THEME = \_\_\_\_\_

PANEL 1-9 = *Frames from Gif or Stop Motion*

PANEL 10 = *QR Code to YouTube Link*