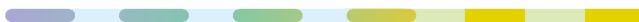
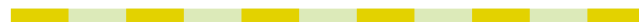
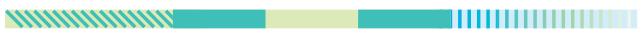


TYPOGRAPHIC *SPRINTS*:

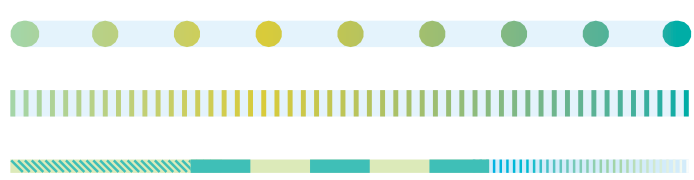


TYPOGRAPHIC ANATOMY.

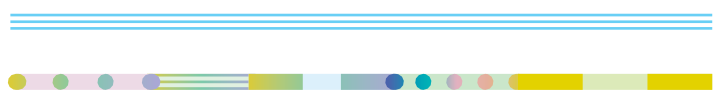


DESCRIPTION:	<p>Develop a Typographic Anatomy Diagram using Adobe Illustrator on an 11x17" Artboard. Try your best to utilize 50 terms within typographic anatomy. See diagram example. Please <u>do not copy the visual aesthetic of the examples provided.</u></p> <p>Watch: Typographic Anatomy. https://youtu.be/UPCldtrDagc</p> <p>Watch: Tutorial by Carrie is located here: Typographic Anatomy Diagram Process https://youtu.be/MW6039ww0uo</p>
OBJECTIVES:	<p>-- a. Students will study and create references for a typographic anatomy diagram</p> <p>-- b. Students will apply a range of typographic</p> <p>-- c. terminology to design work</p> <p>-- d. Students will use form [elements and principles of design to develop a visual aesthetic for the diagram.</p>
CONSIDERATIONS:	<p>-- 1. What are typographic forms?</p> <p>-- 2. Why is understanding typographic forms important?</p> <p>-- 3. What are the elements of Typographic Anatomy?</p>
READING:	<p>Reference the following texts:</p> <p>1.1 <i>Thinking with Type</i>, 2nd, by Ellen Lupton, ISBN-10: 1568989695</p> <p>2.1 <i>Lettering & Type</i>: by Bruce Willen, ISBN-10: 156898765X</p> <p>3.1 <i>Graphic Design Thinking</i>, by Ellen Lupton, ISBN-10: 1568989792</p>
RESEARCH:	<p>SEE ALL PINTERST BOARDS: HTTPS://WWW.PINTEREST.COM/CARRIADYER/</p> <p>-- 1. TYPOGRAPHIC ANATOMY: HTTPS://WWW.PINTEREST.COM/CARRIADYER/TYPOGRAPHIC-ANATOMY/</p> <p>-- 2. \ T Y P 3 _CANDY: WWW.PINTEREST.COM/CARRIADYER/T-Y-P-3-_CANDY/</p> <p>-- 3. TYPOGRAPHIC COLLAGE WWW.PINTEREST.COM/CARRIADYER/TYPOGRAPHIC-COLLAGE/</p> <p>-- 4. LAYOUT DESIGN: WWW.PINTEREST.COM/CARRIADYER/LAYOUT-D3SIGN/</p> <p>-- 5. BOOKS-ZINES: WWW.PINTEREST.COM/CARRIADYER/BOOKS-ZINES/</p>

TYPOGRAPHIC ANATOMY.



ASSIGNMENT
PROCESS.



Assignment Process / Typographic Anatomy:

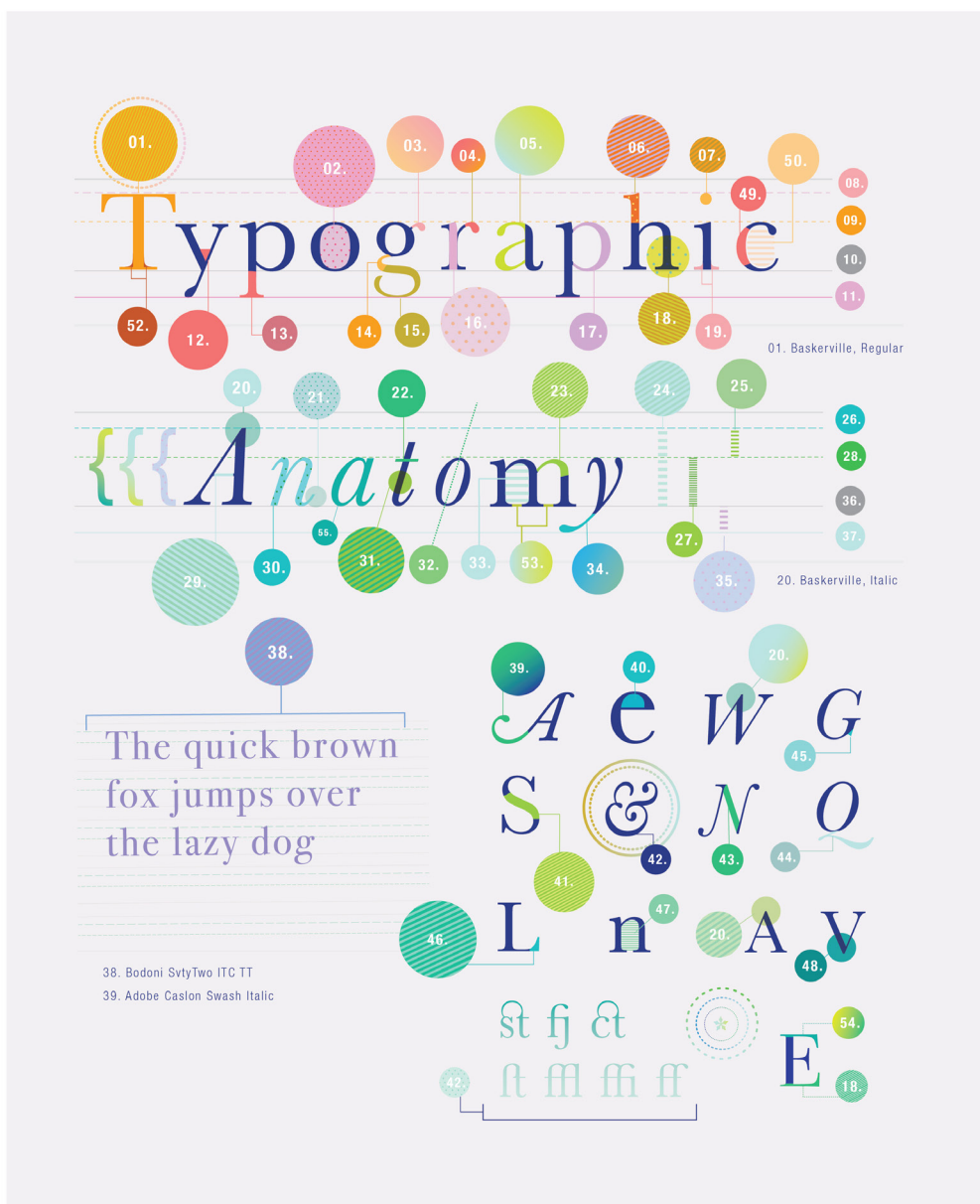
> > > Watch: Tutorial by Carrie is located here:

Typographic Anatomy Diagram Process
<https://youtu.be/MW6039ww0uo>

- __a. Open Adobe illustrator.
- __b. Make a Print document at 11"x17", Portrait.
- __c. Draw a text box.
- __d. Type out a phrase or the words "Typographic Anatomy". **Type each word in a separate text box.
- __e. Apply a typeface to each text box.
[I used *Baskerville Regular* and *Baskerville Italic*.]
- __f. Edit tracking in the Character Panel. Space out letterforms under tracking.
- __g. Duplicate the text boxes -leave originals untouched to the side of your Artboard, out of the way.
- __h. After the text is styled, select text boxes. Go to >Type, Create Outlines. Now go to >Object, Ungroup. Click to the side. You should be able to select typeforms individually.
- __i. Using the Knife Tool, Scissors Tool, or Pathfinder Panel, break down elements of the typographic forms to illustrate each element of anatomy. So, you will literally slice up parts of the forms change the color to illustrate each typographic anatomy term.
- __j. Continue this process for each term. Reference in-class demonstrations.

GLOSSERY OF TERMS

01. / MAJUSCULE /
CAPITAL / UPPERCASE
02. COUNTER
03. EAR
04. TEAR-DROP TERMINAL
05. TWO-STORY LETTER
06. ASCENDER
07. TITTLE
08. ASCENDER LINE
09. X-HEIGHT
10. BASELINE
11. DESCENDER LINE
12. CROTCH
13. DESCENDER
14. LINK / NECK
15. LOOP / LOBE
16. STEM
17. BOWL
18. LEG
19. BILATERAL SERIF
20. APEX
21. FINIAL
22. CROSSBAR
23. SHOULDER
24. CAP HEIGHT
25. ASCENDER
26. ASCENDER LINE
27. X-HEIGHT
28. X-HEIGHT
29. CROSSBAR
30. MINUSCULE / LOWERCASE
31. STEM
32. AXIS
33. APERTURE
34. TAIL & DESCENDER
35. DESCENDER
36. BASELINE
37. DESCENDER LINE
38. PANGRAM
39. SWASH
40. EYE
41. SPINE
42. AMPERSAND
43. STROKE
44. TAIL
45. SPUR
46. BEAK
47. APERTURE
48. VERTEX
49. STRESS
50. OPEN COUNTER
51. EXAMPLES OF LIGATURES
52. BRACKET



GLOSSARY OF TERMS:

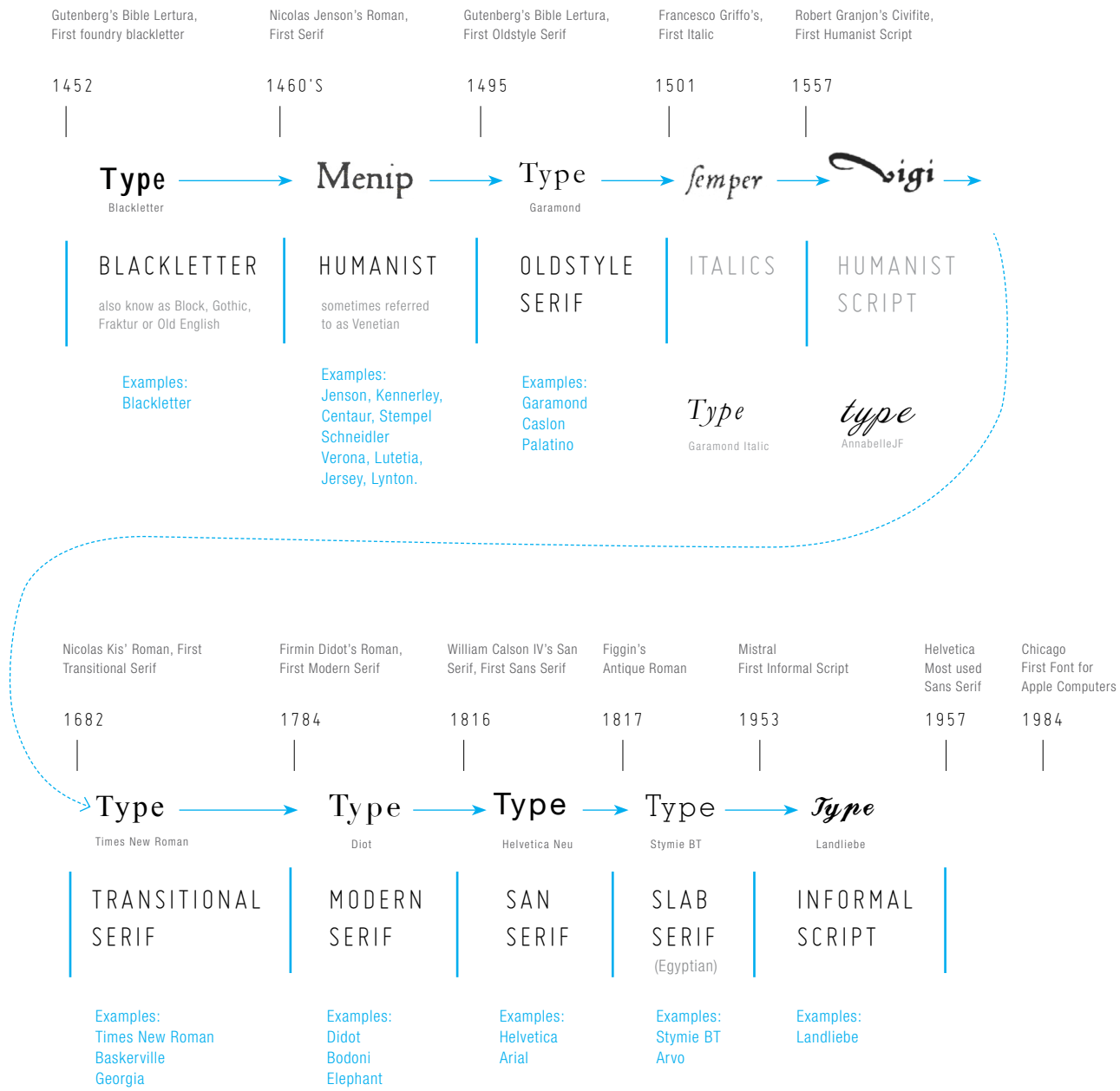
- | | | |
|---------------------------------------|---------------------------|---------------------------|
| 01. / MAJUSCULE / CAPITAL / UPPERCASE | 19. BILATERAL SERIF | 38. PANGRAM |
| 02. COUNTER (CLOSED) | 20. APEX | 39. SWASH |
| 03. EAR | 21. FINIAL | 40. EYE |
| 04. TEAR-DROP TERMINAL | 22. CROSSBAR | 41. SPINE |
| 05. TWO-STORY LETTER | 23. SHOULDER | 42. AMPERSAND |
| 06. ASCENDER | 24. CAP HEIGHT | 43. STROKE |
| 07. TITTLE | 25. ASCENDER | 44. TAIL |
| 08. ASCENDER LINE | 26. ASCENDER LINE | 45. SPIR |
| 09. X-HEIGHT | 27. X-HEIGHT | 46. BEAK |
| 10. BASELINE | 28. X-HEIGHT | 47. APERTURE |
| 11. DESCENDER LINE | 29. CROSSBAR | 48. VERTEX |
| 12. CROTCH | 30. MINUSCULE / LOWERCASE | 49. STRESS |
| 13. DESCENDER | 31. STROKE | 50. OPEN COUNTER |
| 14. LINK / NECK | 32. AXIS | 51. EXAMPLES OF LIGATURES |
| 15. LOOP / LOBE | 33. OPEN COUNTER | 52. BRACKETS |
| 16. STEM | 34. TAIL & DESCENDER | 53. APERTURE |
| 17. BOWL | 35. DESCENDER | 54. ARM |
| 18. LEG | 36. BASELINE | 55. STROKE |
| | 37. DESCENDER LINE | |

OTHER RESEARCH.

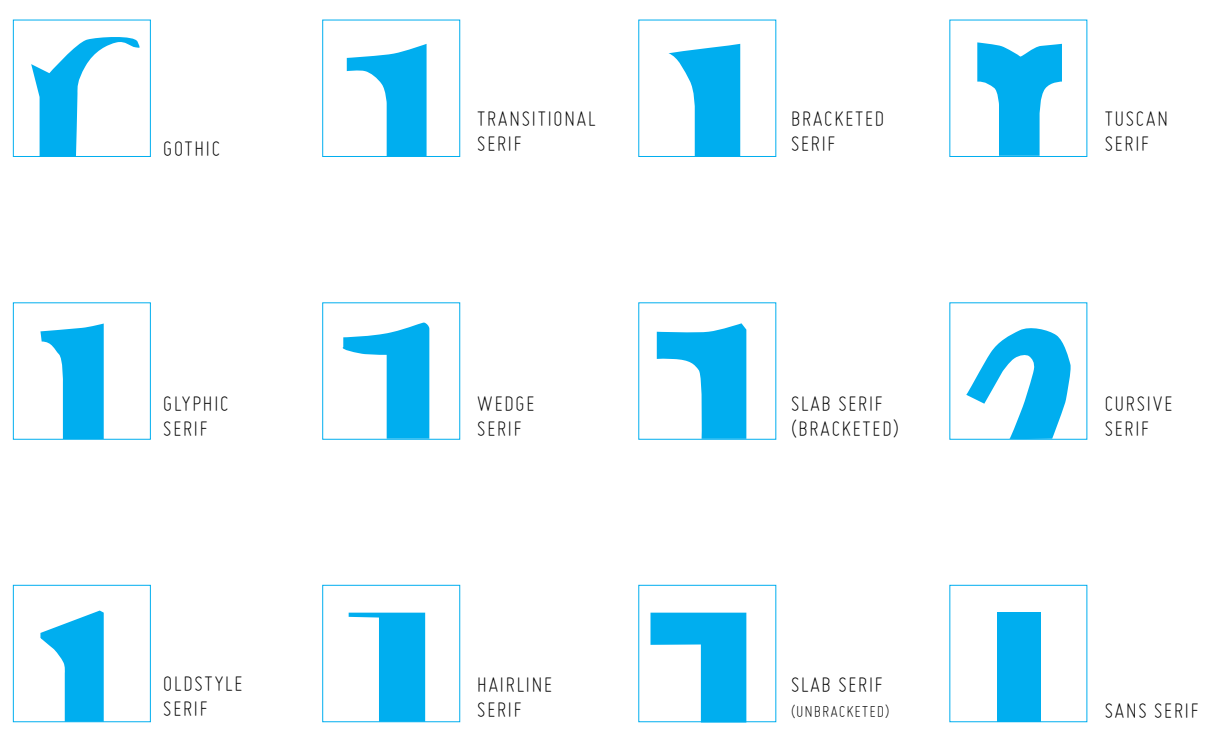


PROGRESSION OF *TYPOGRAPHIC STYLES*

This is a reference:
<https://lovelytypography.com/2007/11/06/type-terminology-humanist-2/>



SERIF TYPES DIAGRAM:



TYPE CLASSIFICATION REFERENCES:

DESIGN IS HISTORY : [HTTP://WWW.DESIGNISHISTORY.COM/1450/TYPE-CLASSIFICATION/](http://www.designishistory.com/1450/type-classification/)

TYPEDIA : [HTTP://TYPEDIA.COM/LEARN/ONLY/TYPEFACE-CLASSIFICATIONS/](http://typedia.com/learn/only/typeface-classifications/)

THINKING WITH TYPE : [HTTP://WWW.PAPRESS.COM/THINKINGWITHTYPE/LETTER/CLASSIFICATION.HTM](http://www.papress.com/thinkingwithtype/letter/classification.htm)

WHERE TO DOWNLOAD FONTS:

(FREE) FONT SQUIRREL : [HTTP://WWW.FONTSQURREL.COM/](http://www.fontsquirrel.com/)

(FREE) DAFONT.COM : [HTTP://WWW.DAFONT.COM/](http://www.dafont.com/)

(FREE) FONTSFACE : [HTTP://WWW.FONTSPACE.COM/](http://www.fontspace.com/)

T.26 : [HTTPS://WWW.T26.COM/](https://www.t26.com/)

MYFONTS : [HTTP://WWW.MYFONTS.COM/](http://www.myfonts.com/)

INDESIGN TUTORIALS:

01 - Preparation For Adobe Indesign Projects
<http://youtu.be/qTli6F69zdY>

02 - Photoshop Action / Image Processing In
Adobe Bridge - Changing Colour Profiles
http://youtu.be/_wnnGz8WLW4

03 - Creating a Scamp, Designing For Your
Composition
<http://youtu.be/3Z1no8aITU8>

04 - Document SetUp In Adobe Indesign
http://youtu.be/RrpJ-ga_wpl

05 - Adobe Indesign Interface Introduction
http://youtu.be/Zo_SLhK3-y8

06 - The Links Panel In Adobe Indesign
<http://youtu.be/Rid0VPNyoiG>

STEP 2 - IMPLEMENTATION:

07 - Laying Out Frame Box's / Build Composition
Structure In Adobe Indesign
<http://youtu.be/fIAQvORG8cM>

08 - Managing / Formatting Text & Tables in
Adobe Indesign
<http://youtu.be/9pe-1KxFxr0>

09 - Placing Images Into Adobe Indesign
<http://youtu.be/k5xTXKyru6Q>

10 - Modifying Indesign Images In Photoshop &
Illustrator.
<http://youtu.be/FIOA9a1kZ7M>

11 - Objects In Adobe Indesign
<http://youtu.be/SmGn9-stcCY>

STEP 3 - FINALISATION:

12 - Export to PDF In Adobe Indesign
<http://youtu.be/rLt0iCyxPNs>

13 - Preflight In Adobe Indesign
<http://youtu.be/OHdQKrSS1n8>



Source: <https://www.behance.net/gallery/56412715/Best-typefaces-poster>

Chris Do, Founder, CEO, Blind

<https://www.behance.net/chrisdo>

Jessica Hische teaches you type!

I'm asked quite a bit how I come up with a different letter every day for Daily Drop Cap. It's not as difficult as you'd think because of the multitude of ways there are to draw a letter. Below is a little exploration of the components of the letter "A" and how you can customize each element to make it special. This is of course just a taste of the endless things you can do to decorate a letter.

